



The smart
and stylish
free-standing system
for the iPod



 iPort™



sharemusic

An innovative way to share music.

Let everyone enjoy a playlist

or download the latest music

...with a touch of a button.



Savor the experiences.

Everyone is a part of
the drama with iPort.

sharevideos



invigorate experiences

Simplicity in function.

Limitless system integration

uplifts every moment.



Delight your company.
Energize any gathering
with life and personality.

inspirecelebration



Free-Standing

FS



Streaming Syncing in a single touch.

iPort FS connects your iPod to any stereo or entertainment center.

Control it from afar via IR.

Free yourself from the constraints of headphones and share your music, photos, and video.

As easy and stylish as iPod.

sync your iPod

play your videos

share your music

show off your photos

dock your iPod

charge the battery

use a remote control

Free-Standing Features

FS-1
FS-2
FS-3
FS-4
FS-5

● Available – Not Available ○ Optional

iPod Charger

charges the iPod when docked



Universal Cradle

works with iPod mini, iPod nano (adapter included), iPod, iPod with color display, iPod with video



Connect to iTunes®

with the touch of a button transfers your music to your iPod



IR Capabilities

allows line-of-site IR remote control of iPod functions (requires optional iPort remote control unit or 3rd-party controller)



Built-in Pre-amp

choose fixed or variable output for volume control at the iPort



FS Control Buttons

allows control of track playback or iPod volume



Upgradeability

via Advanced Connection Box balanced audio/video and RS-232 control available with optional kits



Basic
Connection
Box



Advanced
Connection
Box

FS-2
FS-1

Unbalanced Audio

with RCA cables (up to 25 feet)

Unbalanced Video

with composite video or S-Video cable (up to 25 feet)

FS-5
FS-4
FS-3

IR Capabilities

allows extensive long-distance IR control of iPod functions (requires compatible 3rd-party controller)

Balanced Audio

delivers long-distance balanced audio from iPod (up to 500 feet)

RS-232

enables two-way communication allowing control of the iPod & display of metadata (playlists, track, artist, album name etc.) on the control device

Balanced Video

delivers long-distance balanced video from iPod photo players (up to 250 feet)

Unbalanced Video

via RJ-45 connection, unbalanced video kit available as optional accessory

Simple to Sophisticated An Upgrade Path

FS-1 Charges the iPod while docked. Universal cradle works with iPod mini, iPod nano (adapter included), iPod, iPod with color display, iPod with video. Connect to iTunes with the touch of a button and transfer music and videos to your iPod. Unbalanced audio output with RCA cables and unbalanced video output with composite video or S-Video cable.

FS-2 Adds integrated IR, allowing control of the iPod. Integrated control button allows control of track playback or iPod volume. Includes built-in pre-amp for variable control of output for volume control at the iPort. An optional remote is sold separately.

FS-3 Add Advanced Connection Box for upgradeability. Balanced audio added with an included pair of wallplates, rated for placement up to 500 feet between the wallplates. Included Unbalanced video output via RJ-45 connection. Unbalanced video wallplate is available as an optional accessory. Balanced video and RS-232 control is available with optional kits.

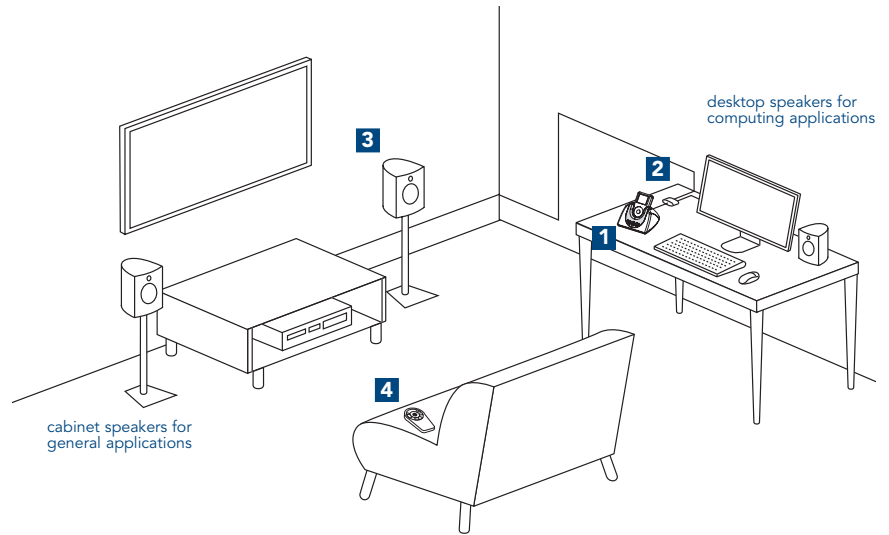
FS-4 Adds integrated RS-232. Enables two-way communication allowing control of the iPod and display of metadata on a control device (playlists, track, artist, album name etc. iPod does not supply album art). Includes RJ-11 to DB-9 female adapter cable.

FS-5 Balanced video enabled with included pair of wallplates rated for placement up to 250 feet between the wallplates.

How it works

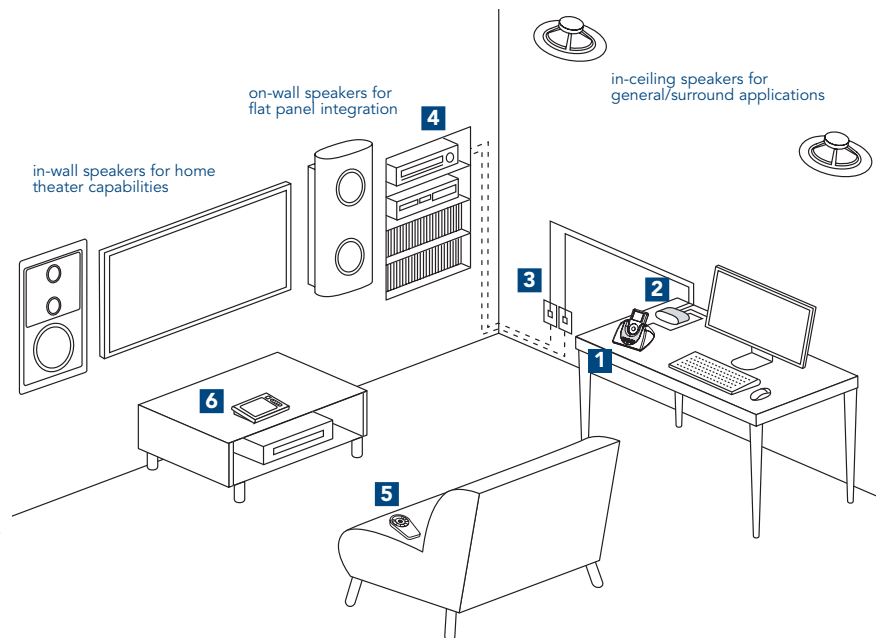
FS-1 and FS-2

- 1 The iPort FS is connected via bi-stranded cable to a BCB (basic connection box) and your computer. The USB connector on the cable allows your iPort to sync with iTunes.
- 2 The other strand on the cable connects to the BCB. The BCB provides power from an off-board DC power supply, while delivering unbalanced audio/video to local sources (RCA, S-Video).
- 3 iPort FS-2 can control the audio output to audio loudspeakers via the volume up/down keys.
- 4 An optional iPort Remote Control can control an iPort FS-2 via IR.



FS-3 thru FS-5

- 1 The iPort FS is connected via bi-stranded cable to an ACB (advanced connection box) and your computer. The USB connector on the cable allows your iPort to sync with iTunes.
- 2 The other cable strand connects to the ACB which provides the iPort power, IR, RS-232, and balanced audio/video connections.
- 3 Sending/Receiving Wallplates add flexibility in sophisticated systems. Allows balanced audio or video for longer distances
- 4 iPort is easily integrated into any whole home audio system.
- 5 The optional iPort Remote Control controls an iPort via IR.
- 6 Control almost all aspects of the iPod in a RS-232 enabled iPort with a RS-232 control system.





shown actual size



www.iportmusic.com

san clemente, ca usa

800.582.7777



©2005 iPort, All Rights Reserved. iPod is a trademark of Apple Computer, Inc., registered in the U.S. and other countries.
All features and specifications are subject to change without notice. 70026 12/05
photography Matthew Mitchell | design fitdesign.com | Designed and Printed in the USA

FS