

ZAS-130

ZAS-130 Distributed Audio System

Installation & Operation Manual

*Specifications and designs are subject to change without notice. © 2003-2006 Oxmoor Corporation, LLC. Oxmoor, ZON, ZAS-130, ZAC-30jr, ZIM-4 are the trademarks and/or registered trademarks of Oxmoor Corporation, LLC.

OXMOOR®

Oxmoor Corporation, LLC.
309A Cahaba Valley Parkway North
Indian Springs, AL 25124
Telephone: 205-982-8200

www.zonaudio.com
Part Number: 1700096

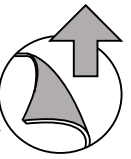
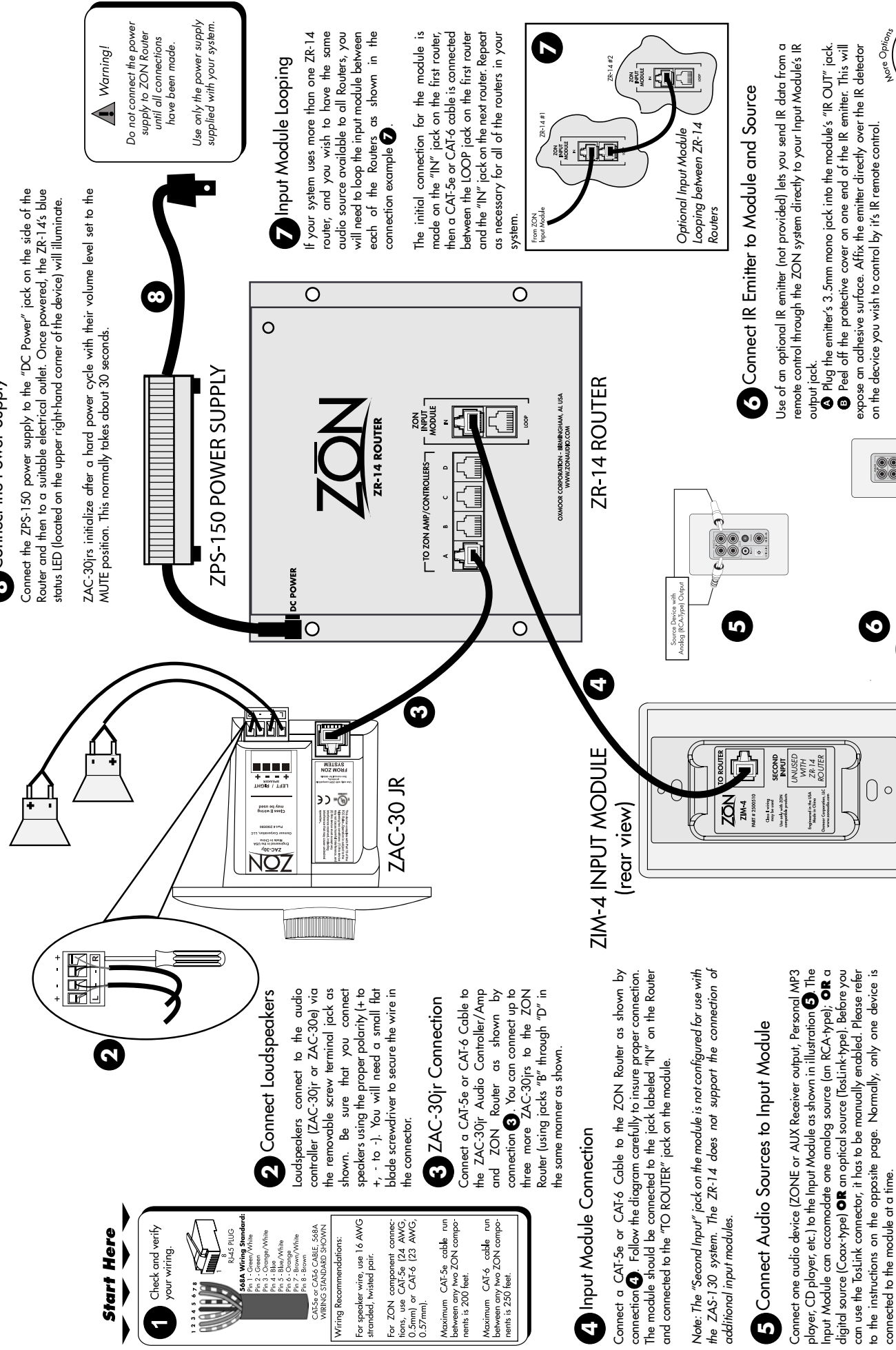
ZON

Whole House
Digital Audio

Quick Setup

ZAS-130 DISTRIBUTED AUDIO SYSTEM

ZON®



IMPORTANT SAFETY INSTRUCTIONS

1. Read these instructions.
2. Keep these instructions.
3. Heed all warnings.
4. Follow all instructions.
5. Do not use this apparatus near water.
6. Clean only with dry cloth.
7. Do not block ventilation openings. Install in accordance with the manufacturer's instructions.
8. Do not install near any heat sources such as radiators, heat registers, stoves, or other apparatus (including amplifiers) that produce heat.
9. Do not defeat the safety purpose of the polarized or grounding-type plug. A polarized plug has two blades with one wider than the other. A grounding type plug has two blades and a third grounding prong. The wide blade or the third prong are provided for your safety. If the provided plug does not fit into your outlet, consult an electrician for replacement of the obsolete unit.
10. Protect the power cord from being walked on or pinched particularly at plugs, convenience receptacles, and the point where they exit from the apparatus.
11. Only use attachments/accessories specified by the manufacturer.
12. Use only with the cart, stand, tripod, bracket, or table specified by the manufacturer, or sold with the apparatus. When a cart is used, use caution when moving the cart/apparatus combination to avoid injury from tip-over.



13. Unplug this apparatus during lightning storms or when unused for long periods of time.
14. Refer all servicing to qualified service personnel. Servicing is required when the apparatus has been damaged in any way, such as power-supply cord or plug is damaged, liquid has been spilled or objects have fallen into the apparatus, the apparatus has been exposed to rain or moisture, does not operate normally, or has been dropped.

Before using the ZON Whole House Audio System, carefully peel off the protective film covering the displays.

Installation and Operation Instructions



INSTALLATION OVERVIEW

Before you install your ZON system components, you should have already installed all of the wiring required for the system. This includes all of the connection cables for the ZAC-30jr amplifier/controllers, the connection cable for the ZIM-4 input module and the speaker wires. For more information on the wiring required for these components, please refer to the step-by-step Quick Setup diagrams inside this document.

ZON Component Installation Tasks

You will have four primary tasks when you install your ZON system components:

1. Mount the ZR-14 Router
2. Install ZAC-30jr Controllers
3. Install ZIM-4 Input Module
4. Connect ZON components and DC power to the ZON router.

You may need a #2 Phillips screwdriver, drywall saw, drill with standard bits for drilling pilot holes, bubble level and tape measure. You will also need wire strippers and a small flat-blade screwdriver to work with the speaker wire connector on the ZAC-30jr.

The interconnect cabling used between ZON components is CAT-5e or CAT-6 cable, which is terminated by 8 pin, 8 conductor modular plugs. ZON recommends that you use the 568A wiring standard (as shown in section 1 of the Quick Setup diagram inside this document). It is further recommended that you test all of the interconnect cabling with a suitable cable tester to make certain that your cables are free of defects and are terminated properly. Most system problems are eventually traced to bad wiring or terminations.

1. ZR-14 ROUTER INSTALLATION

When making any system connection, be sure that the power supply is not connected. This should be the last step.

Mount the ZR-14 router securely to the inside of a structured wiring distribution enclosure using the four mounting holes provided in the router's mounting flange. You should mount the ZR-14 in such a way that you can use its power supply cables without any modification to the cables.

The ZR-14 measures 6.5 inches wide by 6.0 inches high by 2.0 inches deep. If you do not plan to mount this device in an enclosure, you should securely mount it to a fixed surface that complies with the safety recommendations provided in this document.

2. ZAC-30jr INSTALLATION

Following your wiring plan, a CAT-5e or CAT-6 cable should run from the ZAC-30jr controller's rough opening to the ZON router's location. Two pair of speaker wires should run from the ZAC-30jr controller's rough opening to the installed loudspeakers in the controller's listening zone.

Connect the CAT-5e or CAT-6 cable to the FROM ZON SYSTEM jack. You should hear a "click" as the modular plug locks into the jack. Make sure that you have a secure connection. Connect the left and right speaker wires to the removable speaker wire terminal. Use a small, flat blade screwdriver to loosen and tighten the terminals. For proper loudspeaker operation, make certain to follow the connection diagram on the connector, being careful to maintain the required polarity on the terminals and speakers.

Secure the speaker wire connector to the ZAC-30jr. Secure the ZAC-30jr to the rough in j-box or low voltage caddy using the two mounting screws on the device. Do not use a powered screwdriver - hand tools only.

3. ZIM-4 INPUT MODULE INSTALLATION

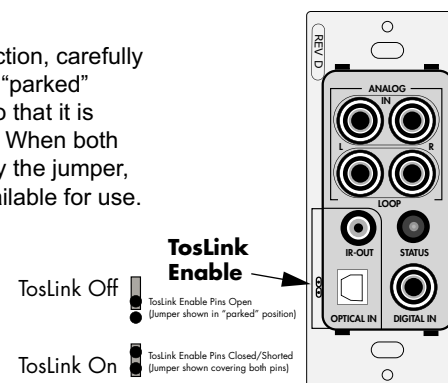
The TosLink Optical Input on Revision D ZIM-4 Input modules must be enabled before use.

To see if you have Revision D ZIM-4 input modules, remove the Decora-sized faceplate and look for a "REV" sticker on the upper left-hand side of the device. Should you see a "REV D" sticker, then the following pertains to your particular situation.

Revision D ZIM-4 input modules ship with a fully functional analog input, analog loop output, coaxial digital input and IR bug output. If you wish to connect a TosLink optical input, you must enable the TosLink input as shown below:

If you do not plan to connect a TosLink optical input, no action is necessary.

To enable the TosLink input connection, carefully remove the jumper from its default "parked" position and re-insert the jumper so that it is covering both TosLink enable pins. When both TosLink enable pins are covered by the jumper, the TosLink input connection is available for use.



Following your wiring plan, you should have a single CAT-5e or CAT-6 cable running from the input module's rough-in location to the ZON Router's location.

Connect the CAT-5e or CAT-6 cable to the "TO ROUTER" jack on the rear of the input module. The "Second Input" jack on the input module is not used with the ZAS-130 system.

Secure the ZIM-4 Input Module to the rough in j-box or low voltage caddy using the two mounting screws on the device. The outer trim plate for the input module is a Decora-styled plate, and can be used by itself, or in the case where you may have more than one Decora device installed in a j-box, you can use a standard Decora trim plate that matches your particular situation. Do not mount ZIM-4 Input Modules in the same box as AC power outlets or switches. If you are unsure about your particular installation, please refer to your local building codes and/or consult with a certified/licensed electrician.

4. CONNECT ZON COMPONENTS AND DC POWER TO THE ZON ROUTER

At the ZON Router's location, connect the ZAC-30jr (or ZAC-30e) controllers to the jacks labeled "TO ZON AMP/CONTROLLERS". There are four jacks provided, and are labelled A through D. It is important that you do not connect anything other than a ZAC-30jr (or ZAC-30e) to these ports. Serious damage to your ZR-14 router and the connected device may occur.

Connect the ZIM-4 input module to the router. The input module jack is labeled "ZON INPUT MODULE". Use the "IN", or top jack. If your system uses more than one ZR-14 router, you will connect the LOOP jack of the first router to the IN jack of the next router in the chain.

Connect the ZPS-150 power supply to the DC power connection on the upper-left side of the router. Then connect the power supply to the AC power.

If your installation was successful, you should have: a blue status light on the ZR-14 router; a green status indicator light on the front of the ZIM-4 input module; and your ZAC-30jr (or ZAC-30) controllers will have a subtle blue color around their volume dial. The system takes about 30 seconds to initialize before ready for use. If you do not see these indicators, go back and verify your wiring and your connections.

In the event that your ZR-14 router is not connected successfully to a ZIM-4 input module, the ZAC-30jr or ZAC-30e controllers will flash their backlights rapidly. Re-check and re-connect your ZIM-4 input module connection to the ZR-14 router to correct this fault indicator.

HOW TO USE THE SYSTEM

Connect an audio source to your ZIM-4 input module with either an analog audio signal (RCA jacks), or digital coax (Single RCA jack). If you plan to use the TosLink input connector, you first must enable the TosLink connection per the instructions on this page.

Make sure that the audio source is playing. At each ZAC-30jr, turn the volume indicator knob clockwise to increase the volume, and counter clockwise to decrease the volume.

The use of an optional ZON remote will allow you to set the bass, treble, balance and EQ for each ZAC-30jr. If you connect an IR emitter between the ZIM-4 and your audio source, you can use the source's IR remote to control the device from any ZAC-30jr location in the home.

To power off a ZAC-30jr, simply press and hold the jog dial until the back light is extinguished. To return the power, briefly press the jog dial. You will note that the controller returns to the last state it was in before the power-off.

Following a power loss, the ZAC-30jr will initialize and default the mute setting. Any custom settings for bass, treble, balance or EQ will need to be reset.

Using the ZSR-4 System Remote (Included with the system):



ZSR-4 Remote

Power

**Tone
Volume
Balance
Mute
Loudness
EQ**

This remote provides power, bass, treble, balance, volume, mute, loudness and EQ control for the ZAC-30jr (or ZAC-30e controllers). The areas of the remote that are circled at the left are supported by the ZAS-130 system.

Buttons and/or functions that are not circled will have no effect on the controller(s) or the ZAS-130 system.

To use the remote, aim the remote at the ZAC-30jr or ZAC-30e controller and press the desired function.

For more information about the use and installation of your ZAS-130 system, please consult the ZON website (www.zonaudio.com). There, you will find answers to frequently asked questions and handy printed reference materials such as application guides and tech support bulletins.